

KUNCAI

证券代码 : 603826

Supplier:
Address:
Postal Code:
Phone:
Fax:
E-mail:

Van Horn, Metz & Company, Inc.
201 East Elm Street, Conshohocken, PA
19428 USA
+1 (610) 828-4500
+1 (610) 828-0936
info@vanhornmetz.com

Distributed by:



www.vanhornmetz.com
[Request Quote or Samples](#)

水晶系列珠光材料

**CRYSTAL SERIES
PEARLESCENT PIGMENTS**

TECHNICAL DATA 技术参数

通过X-Rite和BYK色差仪测试合成珠光KC8300与天然珠光KC100，仅作为一个案例展示合成珠光的效果。
Color value comparison between silver white series KC8300(Synthetic mica based) and KC100(Natural mica based) was conducted by X-Rite and BYK Multi-Angle Spectrophotometer.

亮度更强

从色值数据上可看出合成珠光KC8300的亮度比天然珠光KC100更高。

Strong Brightness

The color value clearly shows the increased brightness performance of synthetic mica based KC8300 compared to the natural mica based KC100.

高纯净度、高白度

银白系列可应用于众多领域，其纯净度和白度决定了最终成品的效果。合成珠光KC8300在检测数据上可看出其超高纯净度和白度。

Increased Clarity and Whiteness

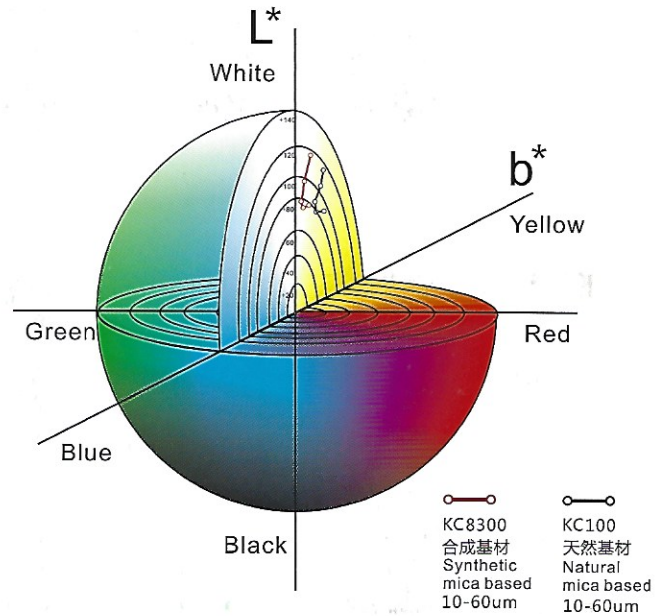
Silver white color is used in a wide variety of applications. The quality of natural mica yields a yellowish tint. However, the test data of synthetic based KC8300 highlights the increased clarity and whiteness when compared to natural mica based KC100.

高闪度

部分配方师对闪点要求高，闪点检测可帮助他们作出正确的选择。合成珠光KC8300经过检测得出更高的闪点数据，保证了它独特的闪度表现。

Excellent Sparkling

The sparkling effect is important to formulators, and BYK testing helps determine the correct level of brilliance. Synthetic mica based KC8300 provides a higher sparkle value proving its spectacular performance.



		Masstone on White				
		L*	a*	b*	C*	h°
KC8300 10-60µm	15°	131.16	-1.49	1.43	2.06	136.15
	25°	109.55	-1.69	1.55	2.29	137.41
	45°	82.98	-1.10	1.79	2.10	121.52
	75°	74.92	-0.88	2.67	2.81	108.35
	110°	77.27	-1.14	3.65	3.82	107.34
KC100 10-60µm	15°	119.58	-1.18	3.43	3.62	109.06
	25°	106.30	-1.44	4.31	4.54	108.43
	45°	85.19	-1.17	4.64	4.79	104.10
	75°	75.86	-1.15	5.78	5.89	101.22
	110°	76.22	-1.28	7.13	7.24	100.17

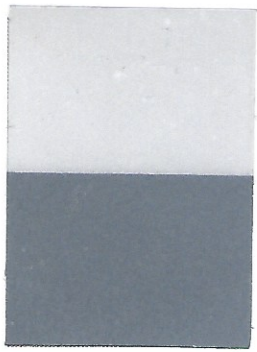


产品型号 Code	品名 / Product Name	粒径范围 Particle Size (μm)	成分 / Composition	
			Synthetic Mica	TiO ₂
KC8108	柔和光泽企鹅白/Penguin White Fine Satin	<10	✓	✓
KC8110	柔和光泽企鹅白/Penguin White Fine Satin	<15	✓	✓
KC8000	柔和光泽企鹅白/Penguin White Satin	5-25	✓	✓
KC8100	柔和光泽企鹅白/Fine Penguin White	10-30	✓	✓
KC8200	企鹅白/Dazzling Penguin White	10-45	✓	✓
KC8300	珍珠光泽企鹅白/Penguin White	10-60	✓	✓
KC8400	明亮光泽企鹅白/Sparkling Penguin White	20-80	✓	✓
KC8500	闪烁珍珠光泽企鹅白/Flash Penguin White	25-100	✓	✓
KC8600	闪光珍珠光泽企鹅白/Sparkle Penguin White	30-120	✓	✓
KC8700	特闪珍珠光泽企鹅白/Glitter Penguin White	40-160	✓	✓
KC8800	特闪珍珠光泽企鹅白/Super Penguin White	50-250	✓	✓
KC8900	超闪珍珠光泽企鹅白/Super Sparkle Penguin White	60-350	✓	✓
KC9000	超闪珍珠光泽企鹅白/Super Sparkle Penguin White	70-700	✓	✓
KC9000H	超闪珍珠光泽企鹅白/Super Sparkle Penguin White	100-1000	✓	✓

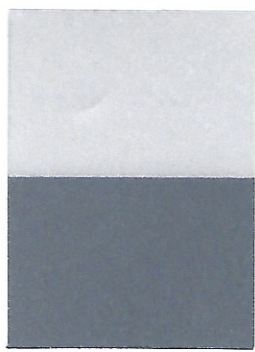
水晶银白系列

CRYSTAL SILVER WHITE SERIES

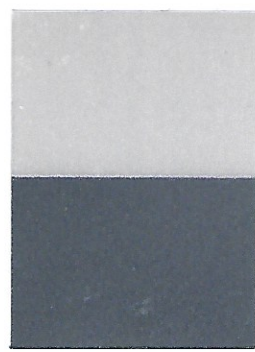




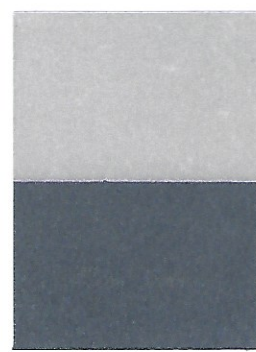
KC8108



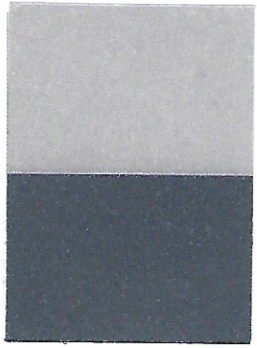
KC8110



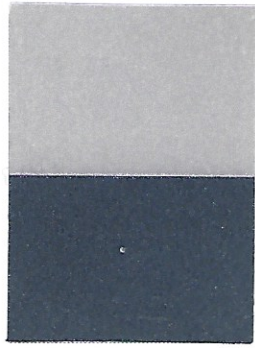
KC8000



KC8100



KC8200



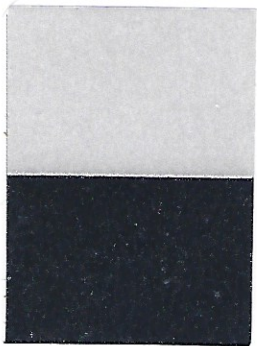
KC8300



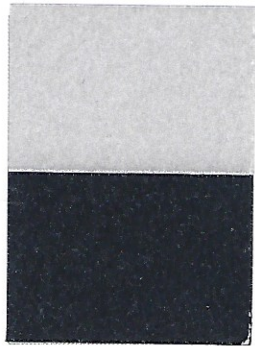
KC8400



KC8500



KC8600



KC8700



KC8800



KC8900



KC9000



KC9000H