

**KUNCAI**

证券代码 : 603826

Supplier:  
Address:  
Postal Code:  
Phone:  
Fax:  
E-mail:

Van Horn, Metz & Company, Inc.  
201 East Elm Street, Conshohocken, PA  
19428 USA  
+1 (610) 828-4500  
+1 (610) 828-0936  
info@vanhornmetz.com

Distributed by:



[www.vanhornmetz.com](http://www.vanhornmetz.com)  
[Request Quote or Samples](#)

**水晶系列珠光材料**

**CRYSTAL SERIES  
PEARLESCENT PIGMENTS**



# TECHNICAL DATA 技术参数

通过X-Rite和BYK色差仪测试合成珠光KC8300与天然珠光KC100，仅作为一个案例展示合成珠光的效果。  
Color value comparison between silver white series KC8300(Synthetic mica based) and KC100(Natural mica based) was conducted by X-Rite and BYK Multi-Angle Spectrophotometer.

## 亮度更强

从色值数据上可看出合成珠光KC8300的亮度比天然珠光KC100更高。

## Strong Brightness

The color value clearly shows the increased brightness performance of synthetic mica based KC8300 compared to the natural mica based KC100.

## 高纯净度、高白度

银白系列可应用于众多领域，其纯净度和白度决定了最终成品的效果。合成珠光KC8300在检测数据上可看出其超高纯净度和白度。

## Increased Clarity and Whiteness

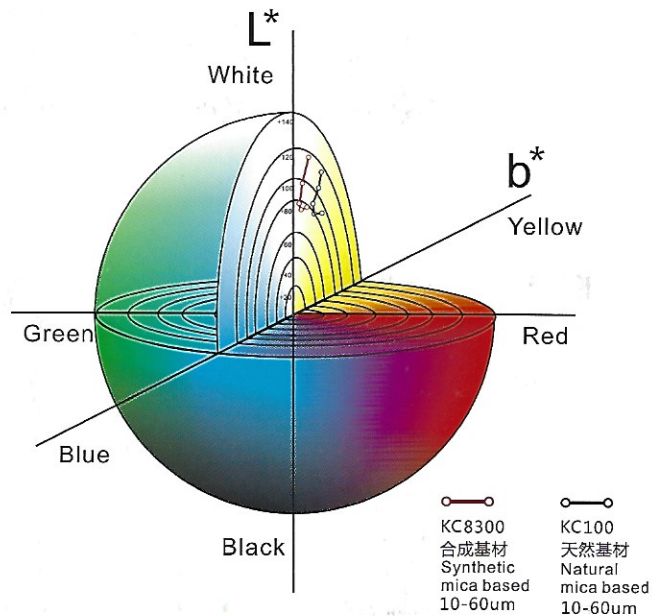
Silver white color is used in a wide variety of applications. The quality of natural mica yields a yellowish tint. However, the test data of synthetic based KC8300 highlights the increased clarity and whiteness when compared to natural mica based KC100.

## 高闪度

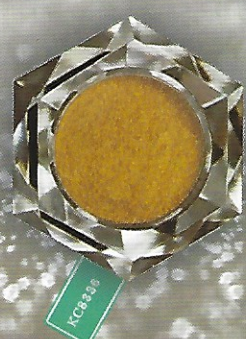
部分配方师对闪点要求高，闪点检测可帮助他们作出正确的选择。合成珠光KC8300经过检测得出更高的闪点数据，保证了它独特的闪度表现。

## Excellent Sparkling

The sparkling effect is important to formulators, and BYK testing helps determine the correct level of brilliance. Synthetic mica based KC8300 provides a higher sparkle value proving its spectacular performance.



		Masstone on White				
		L*	a*	b*	C*	h°
KC8300 10-60µm	15°	131.16	-1.49	1.43	2.06	136.15
	25°	109.55	-1.69	1.55	2.29	137.41
	45°	82.98	-1.10	1.79	2.10	121.52
	75°	74.92	-0.88	2.67	2.81	108.35
	110°	77.27	-1.14	3.65	3.82	107.34
KC100 10-60µm	15°	119.58	-1.18	3.43	3.62	109.06
	25°	106.30	-1.44	4.31	4.54	108.43
	45°	85.19	-1.17	4.64	4.79	104.10
	75°	75.86	-1.15	5.78	5.89	101.22
	110°	76.22	-1.28	7.13	7.24	100.17

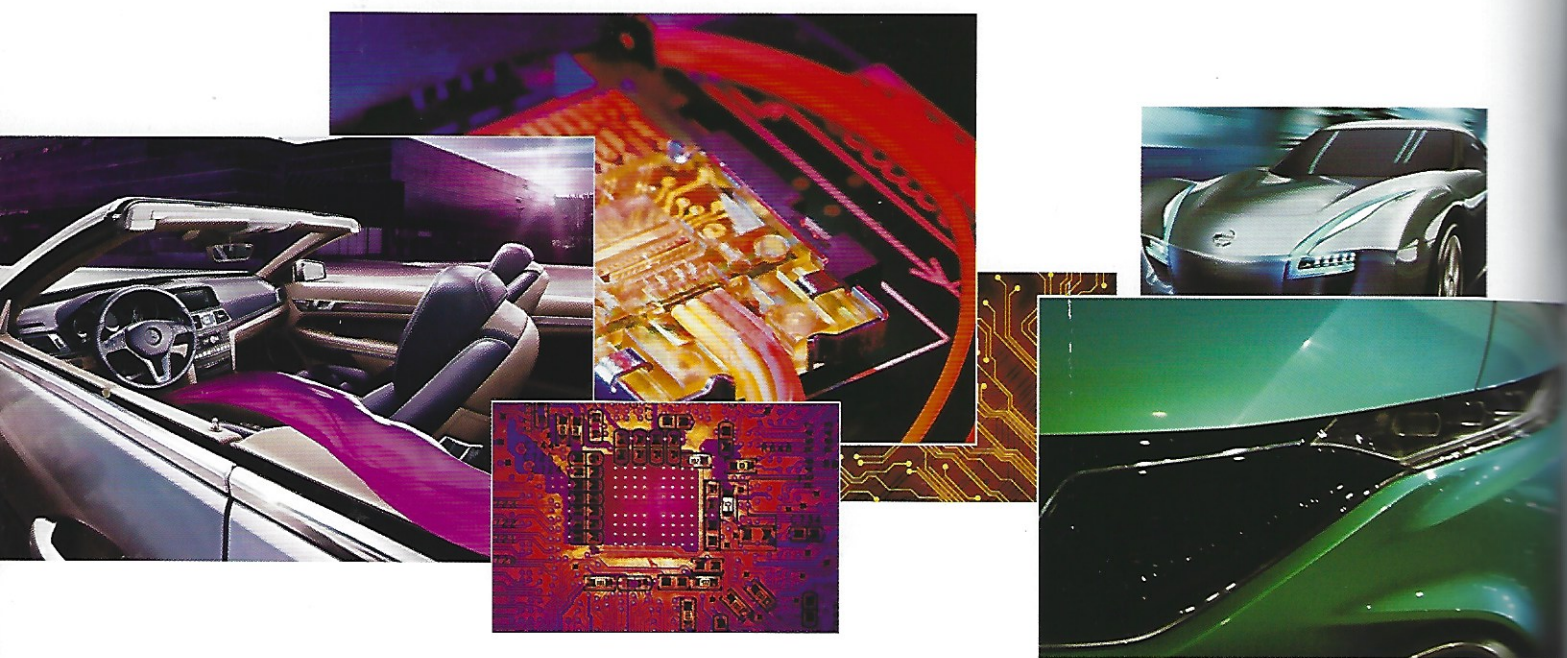




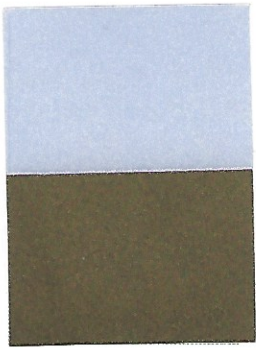
产品型号 Code	品名 / Product Name	粒径范围 Particle Size ( $\mu\text{m}$ )	成分 / Composition		
			Synthetic Mica	TiO <sub>2</sub>	SnO <sub>2</sub>
KC8105	金丝猴/Fine Granary	10-30	✓	✓	✓
KC8115	红金鱼/Fine Fire Goldfish	10-30	✓	✓	✓
KC8119	紫龙鱼/Fine Amethyst	10-30	✓	✓	✓
KC8125	蓝燕雀/Fine Peacock Blue	10-30	✓	✓	✓
KC8135	绿鹦鹉/Fine Green Parrot	10-30	✓	✓	✓
KC8205	金丝猴/Dazzling Granary	10-45	✓	✓	✓
KC8215	红金鱼/Dazzling Fire Goldfish	10-45	✓	✓	✓
KC8219	紫龙鱼/Dazzling Amethyst	10-45	✓	✓	✓
KC8225	蓝燕雀/Dazzling Peacock Blue	10-45	✓	✓	✓
KC8235	绿鹦鹉/Dazzling Green Parrot	10-45	✓	✓	✓
KC8305	金丝猴/Granary	10-60	✓	✓	✓
KC8315	红金鱼/Fire Goldfish	10-60	✓	✓	✓
KC8319	紫龙鱼/Amethyst	10-60	✓	✓	✓
KC8325	蓝燕雀/Peacock Blue	10-60	✓	✓	✓
KC8335	绿鹦鹉/Green Parrot	10-60	✓	✓	✓
KC8505	金丝猴/Flash Granary	25-100	✓	✓	✓

## 水晶虹彩系列

### CRYSTAL INTERFERENCE SERIES







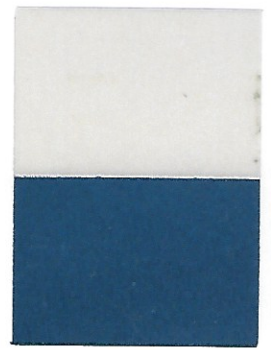
KC8105



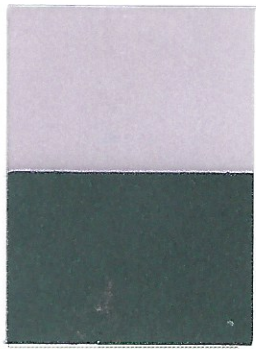
KC8115



KC8119



KC8125



KC8135



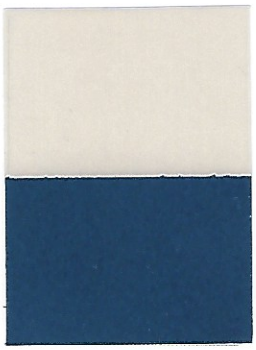
KC8205



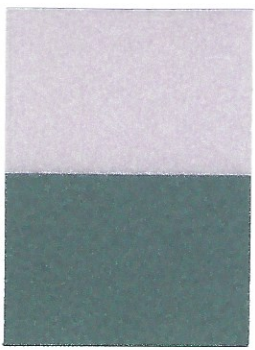
KC8215



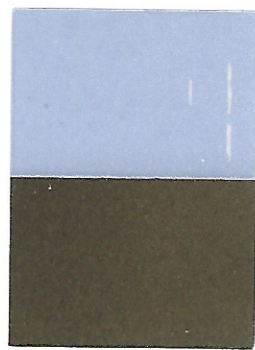
KC8219



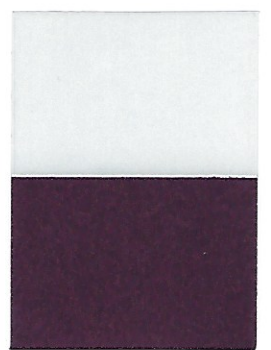
KC8225



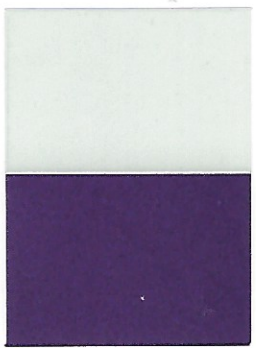
KC8235



KC8305



KC8315



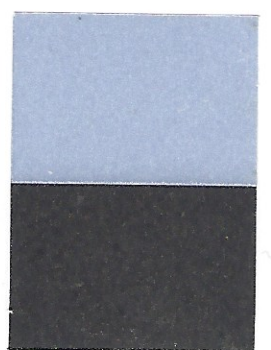
KC8319



KC8325



KC8335



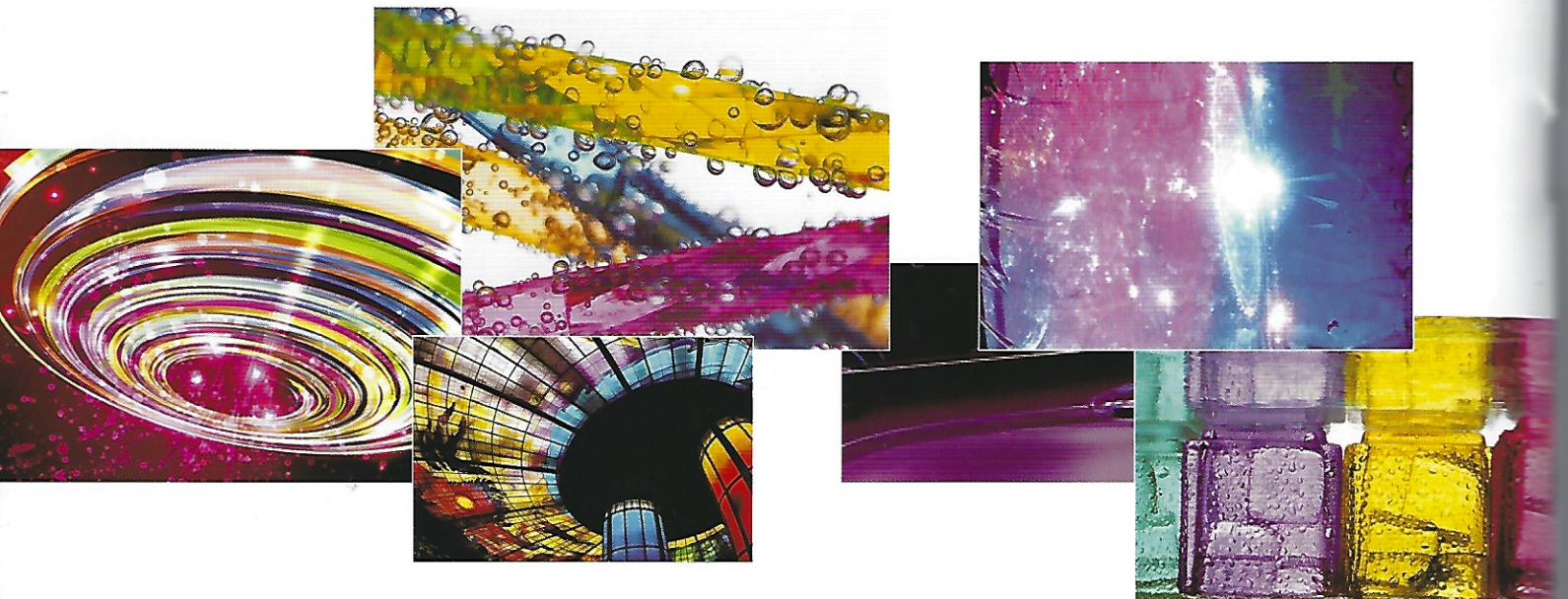
KC8505



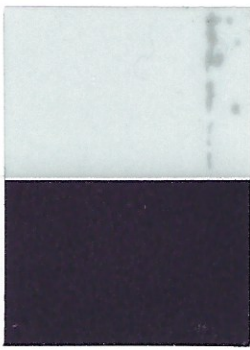
产品型号 Code	品名 / Product Name	粒径范围 Particle Size ( $\mu\text{m}$ )	成分 / Composition		
			Synthetic Mica	TiO <sub>2</sub>	SnO <sub>2</sub>
KC8515	红金鱼/Flash Fire Goldfish	25-100	✓	✓	✓
KC8519	紫龙鱼/Flash Amethyst	25-100	✓	✓	✓
KC8525	蓝燕雀/Flash Peacock Blue	25-100	✓	✓	✓
KC8535	绿鹦鹉/Flash Green Parrot	25-100	✓	✓	✓
KC8705	金丝猴/Glitter Granary	40-160	✓	✓	✓
KC8715	红金鱼/Glitter Fire Goldfish	40-160	✓	✓	✓
KC8719	紫龙鱼/Glitter Amethyst	40-160	✓	✓	✓
KC8725	蓝燕雀/Glitter Peacock Blue	40-160	✓	✓	✓
KC8735	绿鹦鹉/Glitter Green Parrot	40-160	✓	✓	✓
KC8805	金丝猴/Super Granary	50-250	✓	✓	✓
KC8815	红金鱼/Super Fire Goldfish	50-250	✓	✓	✓
KC8819	紫龙鱼/Super Amethyst	50-250	✓	✓	✓
KC8825	蓝燕雀/Super Peacock Blue	50-250	✓	✓	✓
KC8835	绿鹦鹉/Super Green Parrot	50-250	✓	✓	✓

## 水晶虹彩系列

### CRYSTAL INTERFERENCE SERIES







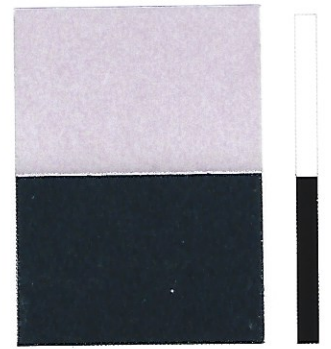
KC8515



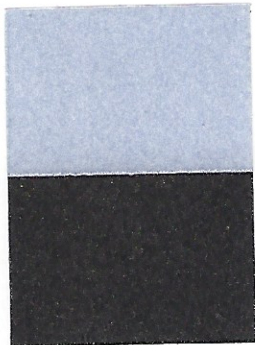
KC8519



KC8525



KC8535



KC8705



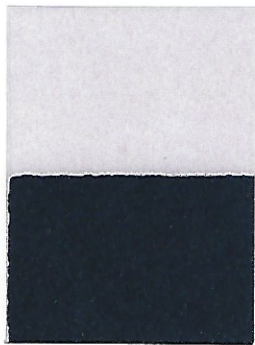
KC8715



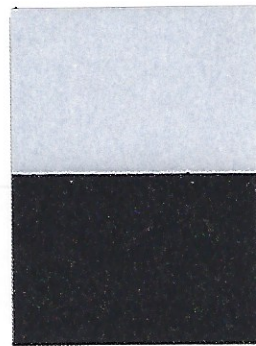
KC8719



KC8725



KC8735



KC8805



KC8815



KC8819



KC8825



KC8835